

Engineered For
Critical Flow Application

Specification

- ▶ Size : 15MM To 200MM
- ▶ Body/Bonnet : CI / DI / C.S / A.S / S.S
- ▶ Pr. Rating : PN 16 / PN 25 / PN 40
- ▶ Bellow : S.S 316 / 321
- ▶ End : Flanged / Butt Weld



Introduction

Due to increased demand of products in the markets & also considering safety issues of the employees as well as plant and machinery plant managers are looking for components that should run in long period and there should not be any leakage in the components during performance.

Among these, valves play an important role in the fields of chemical, pharmaceuticals, oil & gas & in almost all processing industries.

If any leakages are found whole process has to be closed to sort out the problems which will incur heavy losses.

To overcome all these issues & considering the safety of the employees & productivity 4Matic Valves introduce bellow seal globe valves.

Advantages

- ▶ **Triple sealing design** primary seal bellow, secondary back seat & tertiary seal gland.
- ▶ Conically shaped plug with **hard-faced / stellite surface** & body seat hard faced / stellite.
 1. Conical shape reduces possibility of trapping sediments.
 2. Harder surfaces of plug & seat assure high performance without leakage over a product life.
- ▶ Ideally potential & safety for harmful liquids & gases.
- ▶ Prevent from **global emissions** & protect environment.
- ▶ Deliver results according to production targets.
- ▶ Structurally sound.
- ▶ Zero maintenance.
- ▶ Extra durability.
- ▶ Corrosion & friction resistance.
- ▶ Zero fluid loss.
- ▶ Leak free performance.



4Matic Bellow Seal Globe Valve

4Matic®

Body And Bonnet

The body and bonnet are cast with uniform section and generous radius fillets to prevent stress concentration. The castings are precision machined for high performance.



Bellow & Bellow Cup

Bellow Cup is welded to the top surface of bellow collar and prevents media to come in contact with the gland packing, hence provide corrosion and friction resistance & bottom bellow collars are welded to stem.



Conical Type Disc

4Matic Bellow Seal Globe valves feature a conical type disc provide a fine green surface on the taper seat with stellite seat face.

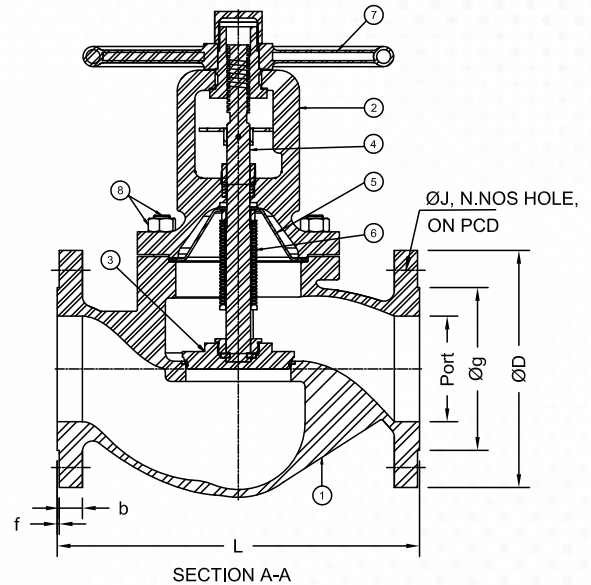


Stem

Bellow seal globe valve feature stem of one piece construction, ACME threaded and precision machined with polished surfaces to reduce friction, minimise leakage and extend stem life.



| No. | Description | Material |
|-----|---------------------------------|---------------------------|
| 1 | Body | CI / DI / C.S / A.S / S.S |
| 2 | Bonnet | CI / DI / C.S / A.S / S.S |
| 3 | Plug | 410 / 304 / 316 |
| 4 | Stem | 410 / 304 / 316 |
| 5 | Bellow Cup | 304 / 316 |
| 6 | Bellow | S.S 316 / 321 |
| 7 | Handwheel | WCB / S.G.I |
| 8 | Body bonnet fitting stud & bolt | CS / S.S |



All Dimension are in mm

| Size | PORT | L | ØD | B | F | ØG | ØJ | N | PCD |
|-----------|------|------|--------------|------|------|-------|-------|----|--------|
| Tolerance | ±1MM | ±3MM | +2MM -1MM | +3MM | ±5MM | ±1MM | ±8MM | | ±1.5MM |
| 20MM | 19 | 117 | 99 | 8.6 | 2 | 42.9 | 15.88 | 04 | 69.8 |
| 25MM | 25 | 160 | 108 | 9.7 | 2 | 50.8 | 15.88 | 04 | 88.9 |
| 32MM | 32 | 180 | 117 | 11.2 | 2 | 63.5 | 15.88 | 04 | 88.9 |
| 40MM | 38 | 200 | 127 | 12.7 | 2 | 73 | 15.88 | 04 | 98.6 |
| 50MM | 49 | 230 | 150 | 14.3 | 2 | 92.1 | 19.05 | 04 | 120.7 |
| 65MM | 65 | 290 | 180 | 15.9 | 2 | 104.8 | 19.05 | 04 | 139.7 |
| 80MM | 80 | 310 | 190 | 17.5 | 2 | 127 | 19.05 | 08 | 152.4 |
| 100MM | 102 | 350 | 230 | 22.3 | 2 | 157.2 | 22.2 | 08 | 190.5 |
| 150MM | 150 | 480 | 280 | 23.9 | 2 | 215.9 | 22.2 | 08 | 241.3 |
| 200MM | 200 | 600 | 345 | 27.0 | 2 | 269.9 | 25.4 | 08 | 298.5 |

Higher Size On Request.

